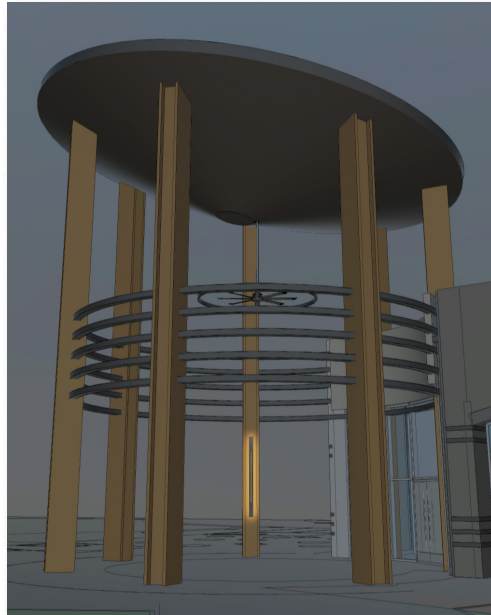


Image for Inspiration Only  
final sizing/configuration TBD



**SPECIFICATION >** ASCENTI's World of One custom scence, HAYDEN, is destined to highlight a wall or pillar with its lovely linear form, perimeter glow and subtle, thin, center-line accent amid an 4", 6" or 8" wide curved or flat faceplate. ASCENTI's renowned customization ability means our engineering team can modify this scence to suit any vision. Please provide specification details, as well as dimming and control specifications, so we may present a custom design solution that meets your project needs.

**ENVIRONMENTS >** Hospitality, Corporate Offices, Residential, Retail, Restaurant and Entertainment Venues. Specify as Interior or Exterior.

**LED >** VIVIO™ LED Photon Series offers advanced engineering utilizing the latest LED technology:  
**AscendLED™** - Ideal for retail, entertainment and daytime use environments at 95+ CRI. 4.4W or 6.5W/FT  
**Circadian-Safe™** - Patented Violet chip emission to achieve the highest CRI available at 98+. Ideal for the home environment to assist our human circadian rhythm. 4.4W or 6.5W/FT  
**HLE™ High Lumen Efficacy** - Meet ASCENTI's next evolution in high-performance LEDs. Our HLE tape boasts an increase of approximately 100 lumens per foot, with only a minimal increase in energy usage @5W/FT.  
**RGBWW (5-in-1 Red-Green-Blue-Double White)** - Combines two white LEDs, one warm and one cool, achieving a wider color spectrum. Separate DMX controls required. 8.5W/FT  
**TW Tunable White Circadian-Safe™** - Allows precise color temperature control in an effort to safely maintain our natural circadian rhythm. Dual BLUE and VIOLET chip design. Separate DMX controls required. 6.5W/FT  
**PTW Dim-to-Warm Circadian-Safe™** - Simple, smooth dimming to full off while simultaneously reducing CRI to warmer tones. Dual integrated Blue/Violet chip design. Eliminates the need for additional color controllers.

**CONSTRUCTION >** Upper and lower mounting set-offs attach to backplate. Choose faceplate as either flat or convex curved with center slot, approx 8" wide. Integral driver. All electrical components are installed, wired and 100% tested prior to shipping.

**MOUNTING >** Wall mount.

**FINISH >** Powdercoat finish is standard in black fine texture. Custom colors are available - consult factory.

**RATED >** Suitable for Dry Location or specify if Wet Location.

**WARRANTY >** 5 years.

**AS THIS IS A CUSTOM WORLD OF ONE ASCENTI LUMINAIRE, SUBMITTALS ARE REQUIRED.**

Type: Qty: Project:

**HYD HAYDEN - CUSTOM LINEAR SCENCE**

**Width (faceplate)**

- 4C 4" curved faceplate
- 4F 4" flat faceplate
- 6C 6" curved faceplate
- 6F 6" flat faceplate
- 8C 8" curved faceplate
- 8F 8" flat faceplate
- C\_\_\_\_\_ Custom width

**Length**

- 36 36"/ 3FT Nominal length
- 48 48"/ 4FT Nominal length
- 60 60"/ 5FT Nominal length
- 72 72"/ 6FT Nominal length
- 96 96"/ 8FT Nominal length
- C\_\_\_\_\_ Custom Size

**Diffuser**

- WH Opal/White acrylic at slot
- No slot

**Linear CCT - Color Temperature**

- 27A 2700°K AscendLED™
- 30A 3000°K AscendLED™
- 40A 4000°K AscendLED™
- 50A 5000°K AscendLED™
- 27CS 2700°K Circadian-Safe™
- 30CS 3000°K Circadian-Safe™
- 40CS 4000°K Circadian-Safe™
- AMB Amber
- 27HLE 2700°K HLE™ High Lumen Efficacy
- 40HLE 4000°K HLE™ High Lumen Efficacy
- RWW RGBWW (5-in-1 Red-Green-Blue-Warm White-Cool White)
- T3018 Tunable White Circadian-Safe™ BLU30A-VIO18CS
- T5027 Tunable White Circadian-Safe™ BLU50A-VIO27CS
- T6527 Tunable White Circadian-Safe™ BLU65A-VIO27CS
- PW3018 PTW Dim-to-Warm Circadian-Safe™ BLU30A-VIO18CS
- PW4027 PTW Dim-to-Warm Circadian-Safe™ BLU40A-VIO27CS
- CK\_\_\_\_\_ Custom Kelvin (contact factory)

**Linear Output (per foot)**

- 2.0 2.0 Watts/LF (Amber, "A" or "CS" single CCT, or Tunable)
- 4.4 4.4 Watts/LF ("A" or "CS" single CCT, or Tunable)
- 6.1 6.1 Watts/LF ("PW" Dim-to-Warm)
- 6.5 6.5 Watts/LF ("A" single CCT or Tunable)
- 8.5 8.5 Watts/LF (RGBWW only)

**Control**

- 010 0-10V Dimmable Driver
- ELV ELV Triac Dimmable Driver
- 5in1 5-in-1 ELV/0-10V Dimmable Driver
- DMX DMX Control (consult factory)
- DAL Dali Dimming
- LUT Lutron Ecosmart Dimming (consult factory)

**Mounting**

- WM Wall mount
- CM\_\_\_\_\_ Custom mount solution

**Finish**

- BKFT Fine Texture Black Powdercoat
- CC\_\_\_\_\_ Custom RAL color (consult factory)

**Options**

- EXT Exterior location

This custom specification sheet is considered a "representation" of ASCENTI Lighting's custom OEM capabilities and is subject to change. ASCENTI may remove or discontinue any option, at any time, for any reason.

